

Pressure Gauge Cocks

DIN 16262

G ½ B

Process Connection

Male thread connection ½" BSP

Instrument Connection

Clamping sleeve ½" BSP female

Nominal Pressure

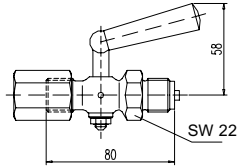
PN 16

Handle

Plastic

Material

- Brass
(Clamping sleeve alloy steel phosphatized)
Ordering number: Z – 01 10 01
- Alloy steel
Ordering number: Z – 01 20 01
- Stainless steel 316 Ti (1.4571)
Ordering number: Z – 01 30 01



DIN 16263

Test Flange 60 x 25 x 10 mm (2.36 x .98 x .39")

Process Connection

Male thread connection ½" BSP

Instrument Connection

Clamping sleeve ½" BSP female

Nominal Pressure

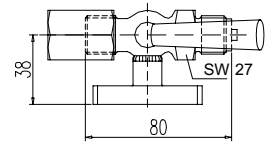
PN 16

Handle

Plastic

Material

- Brass
(Clamping sleeve and cover cap alloy steel phosphatized)
Ordering number: Z – 01 10 02
- Alloy steel
Ordering number: Z – 01 20 02
- Stainless steel 316 Ti (1.4571)
Ordering number: Z – 01 30 02



M 20 x 1.5

Process Connection

Male thread connection M 20 x 1.5

Instrument Connection

Clamping sleeve M 20 x 1.5 female

Nominal Pressure

PN 16

Handle

Plastic

Material

- Brass
(Clamping sleeve alloy steel phosphatized)
Ordering number: 01 10 11
- Alloy steel
Ordering number: 01 20 11
- Stainless steel 316 Ti (1.4571)
Ordering number: 01 30 11

Test Connection Male Thread M 20 x 1.5

Process Connection

Male thread connection ½" BSP

Instrument Connection

Clamping sleeve ½" BSP female

Nominal Pressure

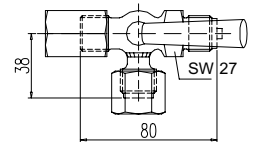
PN 16

Handle

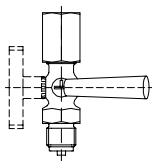
Plastic

Material

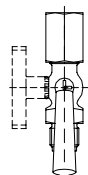
- Brass
(Clamping sleeve and cover cap alloy steel phosphatized)
Ordering number: Z – 01 10 03
- Alloy steel
Ordering number: Z – 01 20 03
- Stainless steel 316 Ti (1.4571)
Ordering number: Z – 01 30 03



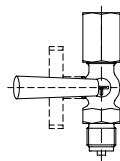
The operating positions are engraved on the plug of the cock:



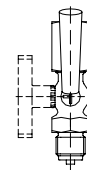
Venting ("Entlüften")



Operating ("Betrieb")



Blowing-out ("Ausblasen")



Testing ("Prüfen"; only cocks with test connection)

Applications

Fluid or gaseous media resp. steam at temperatures between -10 °C to +50 °C (14 °F to 122 °F);

For connecting to a pressure gauge with flat sealing ring EN 837 (DIN 16 258)

Special Configurations

- Pressure gauge cocks DIN 16263 with test connection male thread M 20 x 1,5, process connection male thread M 20 x 1,5, instrument connection clamping sleeve M 20 x 1,5 female upon request
- Other special configurations upon request

The information in this leaflet is given in good faith, but we reserve the right to make changes without notice.



ARMATURENBAU GmbH

Manometerstraße • D-46487 Wesel - Ginderich
Phone: (0 28 03) 91 30-0 • Fax: (0 28 03) 10 35
armaturenbau.com • mail@armaturenbau.com



Subsidiary Company and Sales East Germany and Eastern Europe

MANOTHERM Beierfeld GmbH

Am Gewerbepark 9 • D-08340 Beierfeld
Phone: (0 37 74) 58 - 0 • Fax: (0 37 74) 58 - 545
manotherm.com • mail@manotherm.com

11100

1/02