

# Bourdon Tube Pressure Gauges

Crimped-on Ring Case Stainless Steel

**RChg 63**  
**RChgG 63**

## Standard Versions

Information on general and metrological features (load limits / temperature limitations) and standard pressure ranges / scale divisions can be found in model overview 1000.

### Accuracy (EN 837-1)

Class 1.6

Class 2.5 for pressure ranges 0-600 and 0-1,000 bar  
(0-10,000 and 0-15,000 psi)

### Case

Polished crimped-on ring, 1.4301 (304 stainless steel)

### Case Protection Type (EN 60 529 / IEC 529)

IP 54,

IP 65 for model RChgG with closed blow-out plug

### Blow-out Device

Blow-out plug at the top of the case coverage

### Case Ventilation

By blow-out plug, ventilation required for internal pressure compensation for pressure ranges  $\leq 10$  bar and also recommended for other pressure ranges, as far as the operating conditions allow this.

### Case Filling

for model RChgG: Glycerin

### Nominal Case Size

63 (mm) (2½")

### Wetted Parts

Type -3: Connection: 1.4571 (316 stainless steel)

Bourdon tube: 1.4571 (316 stainless steel),  
argon arc welding,  
 $\leq 60$  bar (800 psi) c-form,  
 $\geq 100$  bar (1,500 psi) helical

Type -1: Connection: brass

Bourdon tube: bronze,  
 $\leq 40$  bar (600 psi) soft-soldered, c-form,  
 $\geq 60$  bar (800 psi) silver brazed, helical

### Case Configuration

Connection: screwed

Position of the connection: bottom connection,  
optional lower back connection (**r**) /  
centre back connection (**rm**)

Mounting device: without, optional back flange for  
surface mounting (**Rh**) / front flange  
for panel mounting (**Fr**) or u-clamp for  
panel mounting (**BFr**), see page 2

### Pressure Ranges (EN 837-1)

0-0.6 bar (0-10 psi) to 0-1,000 bar (0-15,000 psi) for type -3

0-0.6 bar (0-10 psi) to 0- 600 bar (0-10,000 psi) for type -1

### Process Connection

G ¼ B (¼" BSP)

### Window

Laminated safety glass for type -3

Instrument glass for type -1

### Movement

Stainless steel for type -3

Brass/German silver for type -1



### Dial

Aluminum, black figures, white background

### Pointer

Aluminum, black

### Safety Category according to EN 837-1

S1 pressure gauges with blow-out device

S2 safety pressure gauge,

proved: RChg 63-3 up to 1,000 bar (15,000 psi),

RChgG 63-3 up to 600 bar (10,000 psi)

optional: Type -1, with laminated safety glass or polycarbonate

## Ordering Information, Standard Pressure Ranges, Options:

see pages 3 and 4

## Special Versions and further Options among others

- Other process connections upon request
- Other pressure ranges and / or special scales, e.g. double scale bar/psi, coloured fields or areas, dial inscriptions, negative scale etc. .
- Version as refrigeration gauge with temperature scale
- Case parts 1.4404 (316 L stainless steel) upon request
- Increased case protection type, e. g. IP 65 without case filling, upon request
- Welded case / connection for lower back connection or centre back connection upon request
- Other case fillings upon request
- Model RChgG 63-3 bottom connection (lower back connection or centre back connection upon request) for ambient temperatures down to -40 °C (-40 °F); Model RChg 63-3 bottom connection (lower back connection or centre back connection upon request). for ambient temperatures down to -60 °C (-76 °F)
- Position of connection radial at 3 o'clock, 9 o'clock or 12 o'clock (others upon request) or other than vertical installation (90°):
  - for models without case filling and for filled models with pressure equalizing membrane;
  - for filled models without pressure equalizing membrane upon request
- GOST-version for Russia, Ukraine, Kazakhstan
- Sour gas-resistant version according to NACE

## Accessory:

see catalogue-heading 11



Sales and Export South, West, North

## ARMATURENBAU GmbH

Manometerstraße 5 • D-46487 Wesel - Ginderich  
Tel.: +49 (0)2803/91 30-0 • Fax: +49 (0)2803/ 10 35  
armaturenbau.com • mail@armaturenbau.com

Subsidiary Company, Sales and Export East

## MANOTHERM Beierfeld GmbH

Am Gewerbepark 9 • D-08344 Grünhain-Beierfeld  
Tel.: +49 (0) 37 74 / 58-0 • Fax: +49 (0)37 74 / 58-545  
manotherm.com • mail@manotherm.com

**1212**  
11/09

# Case Configuration, Code Letters, Dimensional Data and Weights, Blow-out Device

Bottom connection	Lower back connection	Centre back connection
-------------------	-----------------------	------------------------

No mounting device		
<p>(no additional code letters)</p>	<p>code letter: <b>r</b></p>	<p>code letters: <b>rm</b></p>

Back flange for surface mounting		
----------------------------------	--	--

<p>code letters: <b>Rh</b></p>	<p>code letters: <b>rRh</b></p>	<p>code letters: <b>rmRh</b></p>
--------------------------------	---------------------------------	----------------------------------

Front flange for panel mounting	
---------------------------------	--

<p>code letters: <b>rFr</b></p> <p>recommended panel cut out for <math>\text{Ø } 67 \pm 0.3 \text{ mm (0.01")}</math></p>	<p>code letters: <b>rmFr</b></p> <p>recommended panel cut out for <math>\text{Ø } 67 \pm 0.3 \text{ mm (0.01")}</math></p>
---	--

U-clamp for panel mounting	
----------------------------	--

<p>code letters: <b>rBFr</b></p> <p>recommended panel cut out for <math>\text{Ø } 64 \pm 0.3 \text{ mm (0.01")}</math></p>	<p>code letters: <b>rmBFr</b></p> <p>recommended panel cut out for <math>\text{Ø } 64 \pm 0.3 \text{ mm (0.01")}</math></p>
--	---

Dimensional data (mm / inches) and weights (kg / lb)																				
--	--	--	--	--	--	--	--	--	--	--	--	--	--	--	--	--	--	--	--	--

NCS	a	a1	b	b1	b2	b3	c	c1	c2	c3	D	D1	D2	d1	d2	d3	e	G	G1
63	10	13	33	37	36	40	5	2	13	13	67	62	64	75	85	3.6	18	G ¼ B	½" NPT
2 ½"	.4	.51	1.30	1.46	1.42	1.57	.2	.08	.51	.51	2.63	2.44	2.52	2.95	3.35	.14	.71	¼" BSP	

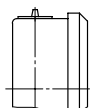
  

NCS	g	g1	h <sup>±1</sup>	h1 <sup>±1</sup>	s	s1	s3	s4	SW	approx. weight <sup>1)</sup>	
										RChg	RChgG
63	60	60	54	54	5	1	9.5	8.5	14	0.18	0.25
2 ½"	2.36	2.36	2.13	2.13	.2	.04	.37	.33	.55	.40	.55

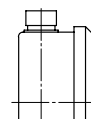
<sup>1)</sup> Information for version without mounting device

Blow-out device	Optional:
-----------------	-----------

Blow-out plug 19



Blow-out plug 24 (reclosable)





## Further Options regarding Ordering Information

Basic Model:	Bourdon Tube Pressure Gauge, Crimped-on Ring Case	RChg
Model Code:		see page 3
Options:	<p>red mark on the dial</p> <p>receiver gauge 0.2-1 bar, scale 0-100%</p> <p style="text-align: right;">linear square</p> <p>special adjustment (reference points = odd values, e. g. 100 KN = 8.735 bar)</p> <p>window laminated safety glass for type -1 (= S2 see below) acrylic glass (PMMA)<sup>1)</sup> polycarbonate (PC) (= S2 see below)</p> <p>movement stainless steel for type -1 (for -3 and -6 standard)</p> <p>pressure equalizing membrane for model RChgG with blow-out device Ø 1" (25 mm) in the back of the case when bottom and lower connection</p> <p>blow-out plug 24 (reclosable)</p> <p>case ventilation no. 22 for outdoor installation</p> <p>case polished</p> <p>density examination with helium leak detection up to of the measuring unit 10<sup>-9</sup> mbar l/s for types -3 and -6</p> <p>wetted parts, free of grease and oil, up to 0-600bar (0-10,000 psi) adjustment ≤ 250 bar (3,000 psi) with dry air, ≥ 400 bar (5,000 psi) with distilled water, dial marking: symbol cancelled oil can</p> <p>oxygen version up to 0-600 bar<sup>2)</sup> (0-10,000 psi) free of grease and oil, additional restrictor screw in the inlet port, orifice Ø 0.3 mm (0.01"), dial inscription: oxygen EN 837-1 in connection with oxygen version requires safety category S2<sup>3)</sup> or S3</p> <p>silicone-free version version: German Lloyd or Russian Sea Register <b>Model RChgG 63</b> copy of the certificate upon request</p> <p>safety category S2 for version -1 up to 0-600 bar (0-10,000 psi) window made of laminated safety glass or polycarbonate (PC)</p> <p>restrictor screw in pressure inlet port material: as process connection brass, stainless steel or Monel orifice Ø 0.8 mm (0.03") orifice Ø 0.6 mm (0.02") (not Monel) orifice Ø 0.3 mm (0.01") (not Monel)</p> <p>measuring point marking stainless steel-plate 12 mm x 55 mm (0.47" x 2.17"), wire mounting or sticker on case coverage</p>	(order at the moment still as cleartext)

### Special Versions: Please describe your requirements clearly

<sup>1)</sup> not for S2

<sup>3)</sup> see "safety category" page

<sup>2)</sup> for instruments without case filling

Technical changes, replacement of materials and errors excepted.