

# Bourdon Tube Pressure Gauges

**Bayonet Ring Case Stainless Steel, Solid Front/Blow-out Back  
with Inductive / Electronic Limit Switch**

Accuracy class 1.6,  
Nom. Size 63 (2½")



Model

**RSCh 63**

This data sheet contains ordering information, minimum pressure ranges, information about electrical connections and dimensional drawings of Bourdon tube pressure gauges model RSCh 63 with inductive or electronic limit-switch contact assembly.

Technical details of pressure gauges model RSCh 63 and the available options can be found on data sheet 1610.

These descriptions as well as the ordering information are valid also for versions with built-in inductive or electronic limit-switch, as far as there are no different features mentioned below.

Liquid filled cases are not available with built-in inductive or electronic limit-switch contact assemblies in nom. case size 63 (2½").

For detailed information about use and operation of inductive and electronic limit-switch contact assemblies please note our **general information leaflet 9000**, and for further information, especially about the available make/break operations, see the data sheets for the individual models of limit-switch contact assemblies:

**Inductive:** data sheet **9200**

**Electronic:** data sheet **9201**

## Minimum Pressure Range

Every pressure gauge needs a sufficient amount of torque to operate the limit-switch contact assemblies with minimized error. For this reason the following minimum pressure ranges are to consider:

1 x inductive  
1 x electronic = 0-2.5 bar (30 psi)

2 x inductive  
2 x electronic = 0-4 bar (60 psi)

## Adjustment

The inductive limit-switch contact assembly can be adjusted between minimum 2 % and maximum 98 % of the full scale value. Take off bayonet ring for adjustment.

Option: Removable key for adjusting the set point from outside through the polycarbonate window (standard for case configurations Fr/rFr)

## Electrical Connection

1 m (3 feet) connection cable, 2 wires, cable lead through with rubber bushing and strain relief at the bottom of the right side of the case (single contact assembly), respectively one on the right side, one on the left side (double contact assembly) (right/left side from a viewer's perspective when looking on the dial); other positions upon request (extra charges!); dimensional drawings: see reverse side

Option: Plug connector according to DIN EN 175301-803 for applications at protective low voltages  $\leq 48$  V; position: right side of the case at 3 o'clock when looking on the dial (dimensional drawings upon request); other plug connectors or cable connections upon request

## Window

Laminated safety glass

## CE-Marking

according to EMC-Directive



RSCh 63-3, 0-250 bar, with inductive limit-switch I 12, here special version with ¼" NPT connection, free of grease and oil

## Safety Features

Safety case according to S3 EN837-1 with solid front between measuring system and dial and a full blow-out safety back, both 304 stainless steel (1.4301). Should the Bourdon tube rupture, the entire case back separates, allowing full relief.

The instruments are tested according to EN 837-1 and marked with **EN837-1**.

## How to Order:

Please add the following ordering information to the regular ordering code of the pressure gauge (compare data sheet 1610):

Code letter for limit-switch contact assembly: **I = inductive**  
**E = electronic**

Code number for switching function: **1, 2, 12, 21, 11, 22**  
see data sheets 9200, 9201

## Examples for Ordering Information:

- RSCh 63-1, 0-4 bar, ¼" BSP, I 1
- RSCh 63-3, rFr, 0-6 bar, ¼" NPT, I 21



**ARMATURENBAU GmbH**

Manometerstraße 5 • D-46487 Wesel - Ginderich  
Phone: (0 28 03) 91 30 - 0 • Fax: (0 28 03) 10 35  
armaturenbau.com • mail@armaturenbau.com



Subsidiary Company and Sales East Germany and Eastern Europe

**MANOTHERM Beierfeld GmbH**

Am Gewerbepark 9 • D-08340 Beierfeld  
Phone: (0 37 74) 58 - 0 • Fax: (0 37 74) 58 - 545  
manotherm.com • mail@manotherm.com

**1619.2**

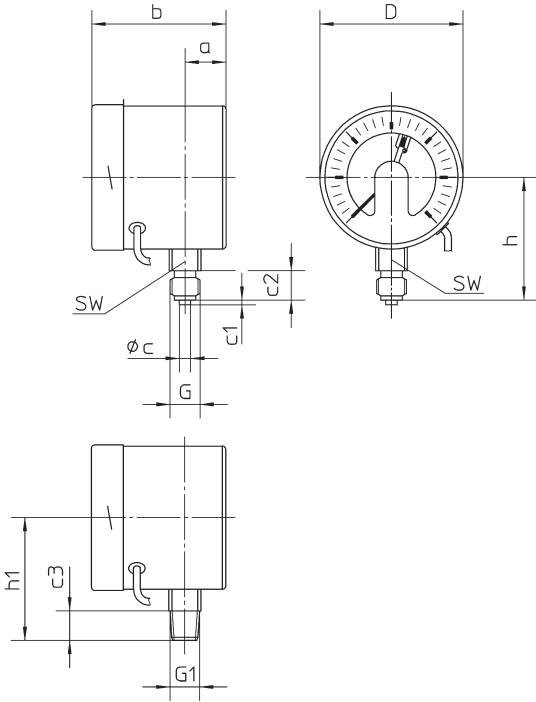
5/04

# Case Configurations, Electrical Connection, Dimensional Data, and Weight

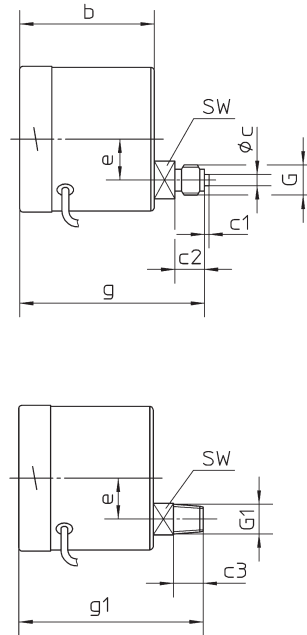
Different dimensions in comparison to data sheet 1610: Dimensions b, b1, g and g1 (front-to-back sizes)

The precise locations of the electrical connections are shown in the dimensional drawings below. Others than standard locations are available upon request at additional charges only.

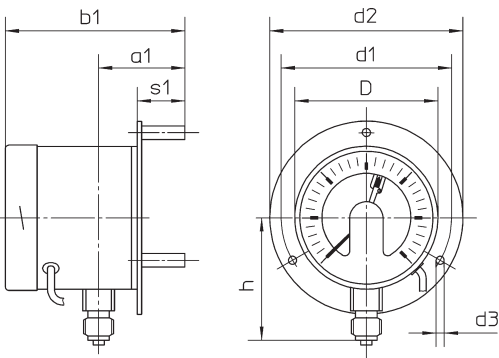
Bottom connection



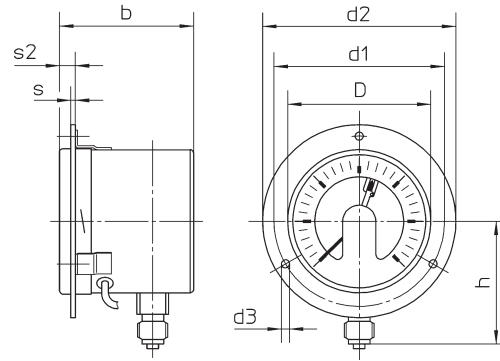
Lower back connection (r)



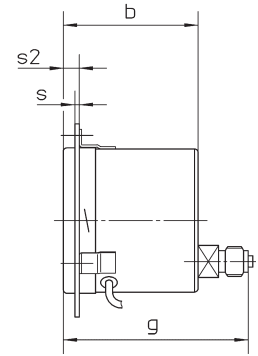
Bottom connection, rear mounting flange (Rh)



Bottom connection, front flange <sup>1)</sup> (Fr)

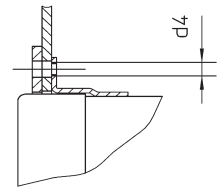


Lower back connection, front flange <sup>1)</sup> (rFr)



<sup>2)</sup> Case configuration "Rh" includes 3 separated mounting spacers.

<sup>1)</sup> Case configurations "Fr" and "rFr" will be supplied with 3 mounting brackets welded to the case and a separated cover front ring.



## Dimensions (mm / inches) and Weight (kg / lb)

Nom. Size	a	a1	b*	b1*	c	c1	c2	c3	D	d1	d2	d3	d4	e	G	G1
63 2 1/2"	18 .71	38 1.5	59 2.32	79 3.11	5 .2	2 .08	13 .51		64 2.54	75 2.95	85 3.35	3.6 .14	M3	18 .71	G 1/4 B 1/4" BSP	1/4" NPT

\* For versions with double limit-switch contact assembly, please add 20 mm (.79") to dimensions b, b1, g and g1. The instrument is supplied with a second cable lead through and 1 m (3 feet) connection cable at the left side of the case.

g ±1*	g1 ±1*	h ±1	h1 ±1	s	s1	s2	SW	Weight (approx.)
78 3.07	81 3.19	53 2.09	56 2.2	1 .04	21 .83	6 0.24	14 .55	0,300 0.66

The information in this leaflet is given in good faith, but we reserve the right to make changes without notice.