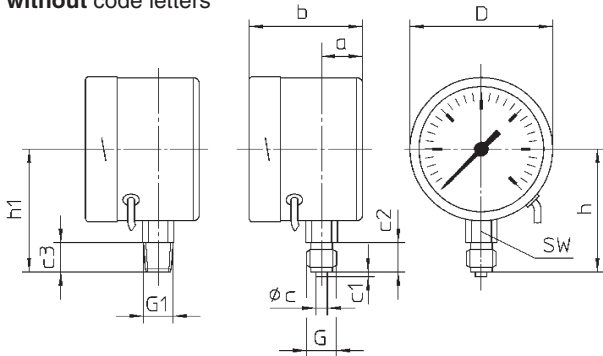


Case Configurations, Code Letters, Dimensional Drawings and Weights

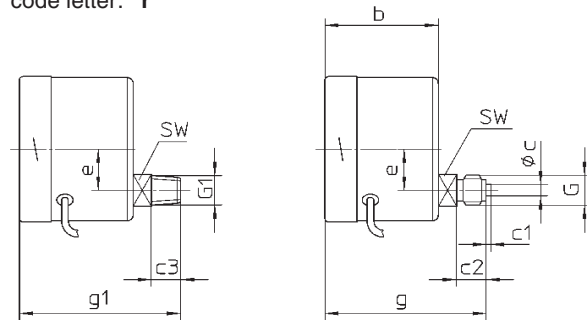
The front-to-back sizes b and b1 as well as dimensions g and g1 are different than the dimensions of the basic model, please compare table below and data sheet 1610.

The position of the cable entry is shown in the dimensional drawings below. Other positions for the cable entry only upon request (extra charges!).

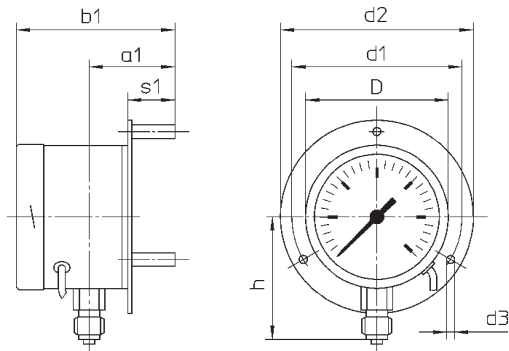
Bottom connection,
without code letters



Lower back connection,
code letter: r

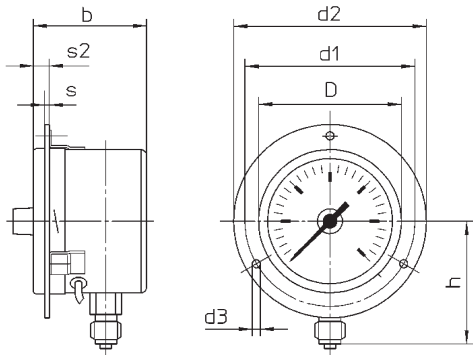


Bottom connection,
rear mounting flange,
code letters: **Rh**

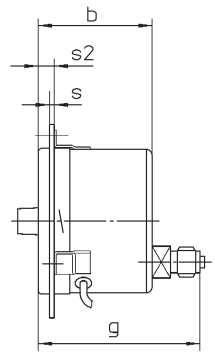


Case configuration "Rh" includes 3 separated mounting spacers.

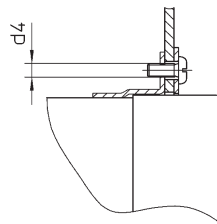
Bottom connection,
front mounting flange,
code letters: **Fr**



Lower back connection,
front mounting flange,
code letters: **rFr**



Case configurations "Fr" and "rFr" will be supplied with a separated cover front mounting flange and mounting brackets welded to the case.



Dimensional Data (mm / inches) and Weight (kg / lb)

NCS	a	a1	b	b1	c	c1	c2	c3	D	d1	d2	d3	d4	e	G	G1	g ^{±1}	g1 ^{±1}	h ^{±1}	h1 ^{±1}	s	s1	s2	SW	Weight (approx.)
63	18	38	50	70	5	2	13	64	75	85	3.6			18	G ¼ B	¼" NPT	72		54	1	21	7	14	0.29	
2 ½	.71	1.5	1.97	2.76	.2	.08	.51	2.52	2.95	3.35	.14		M3	.71	¼" BSP	¼" NPT	2.83		2.13	.04	.83	.28	.55	.64	

The information in this leaflet is given in good faith, but we reserve the right to make changes without notice.